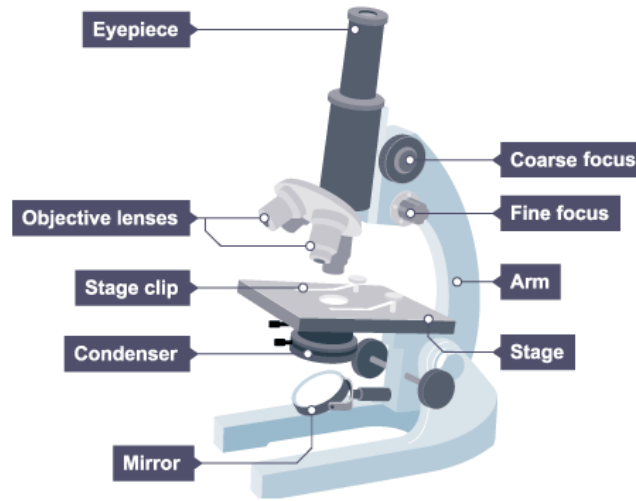


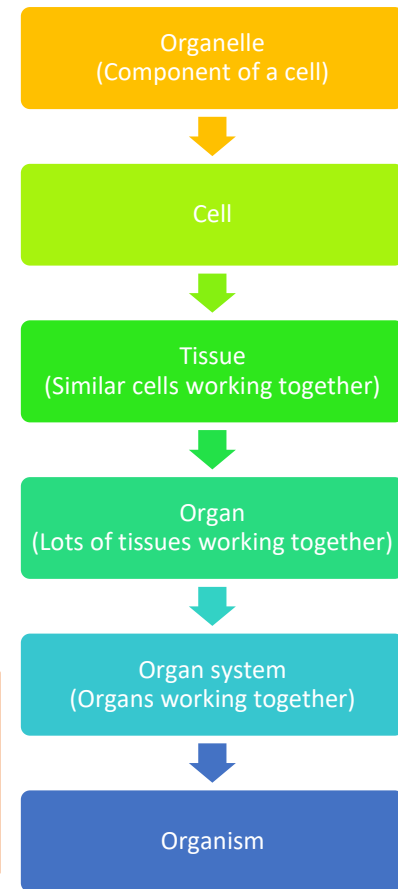
Key word	Definition
Cell	The smallest functional unit in an organism
Animal cells	Contains a nucleus, cytoplasm, mitochondria and cell membrane
Plant cells	Contains the same parts as an animal cell plus a vacuole, chloroplasts and a cell wall
Nucleus	Controls the cell and contains genetic material
Cytoplasm	Jelly-like fluid where all the chemical reactions happen
Cell wall	Surrounds the plant cell to support and hold its shape
Chloroplast	Site of photosynthesis and contains chlorophyll
Vacuole	Full of sap to keep the cell firm
Mitochondria	Releases energy for the cell through respiration



# Biology: Cells



1. Place the slide on the stage.
2. Use the lens with the lowest magnification.
3. Turn the coarse focus to find the object.
4. Turn the fine focus to make the image clearer.



**Specialised cells** – have features/shapes that help them do their job



Palisade cell



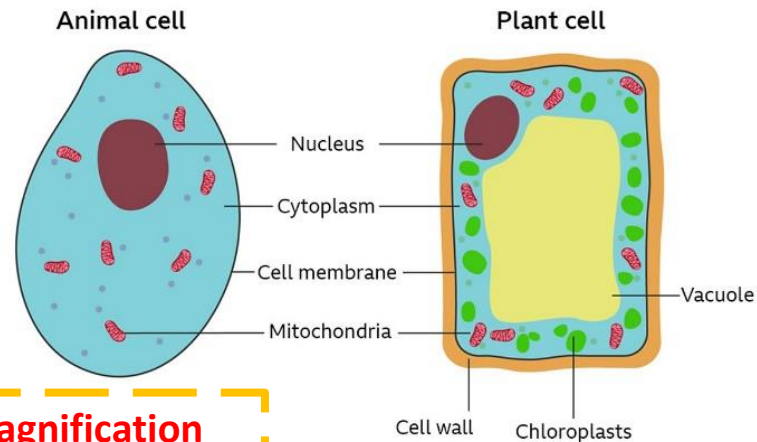
Root hair cell



Red blood cell



Nerve cell



**Total magnification = Eyepiece lens magnification × Objective lens magnification**