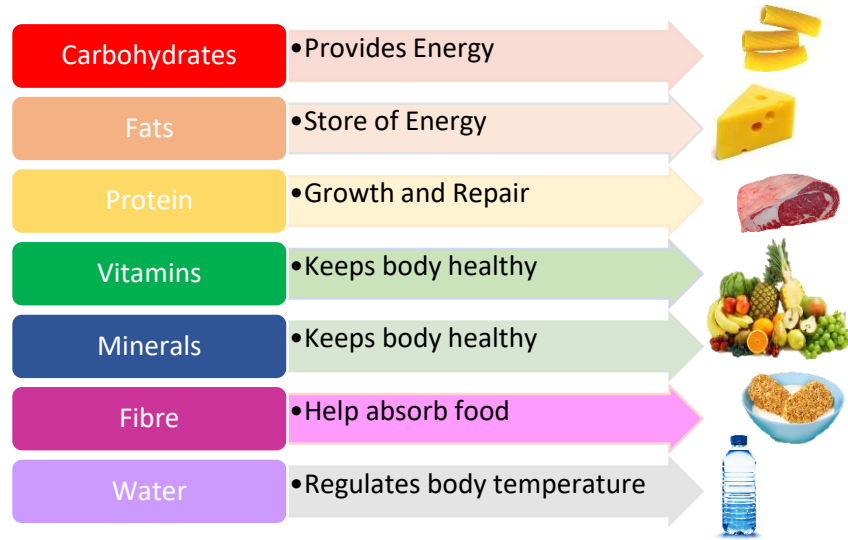
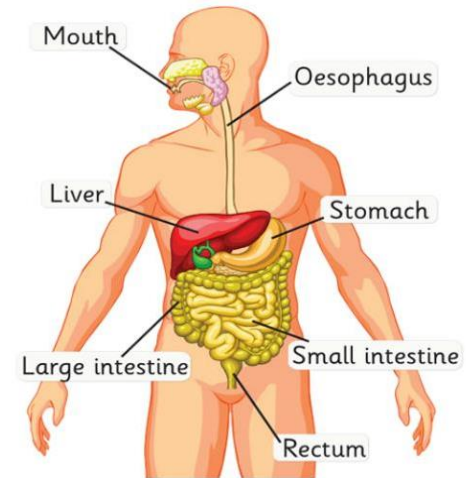


Biology: Food and Digestion

Key word	Definition
Food groups	The seven dietary nutrients we need for a balanced diet
Deficiency	lack of a certain nutrient, that could cause disease
Insulin	The hormone which allows glucose to enter cells
Digestive system	The organ system in which food is broken down and absorbed
Enzyme	A biological catalyst used in digestion
Active site	The region of an enzyme specific to the substrate
Optimum temperature	The temperature condition in which the enzyme works at its fastest rate
Lock and key hypothesis	The model that an enzyme (lock) is complementary to a specific substrate (key)
Absorption	The process of absorbing substances
Villi	The surface of the small intestine where absorption occurs.



Digestive enzyme	Substrate	Product
Amylase	Starch	Glucose
Lipase	Fat	Fatty acid and Glycerol
Protease	Protein	Amino Acids



Type 1 diabetes	Type 2 diabetes
Produce little or no insulin	Body cells don't respond to insulin
Treatment - Insulin replacement	Treatment – balanced diet, exercise and lose weight

