



**THE NOTTINGHAM  
EMMANUEL SCHOOL**  
A Church of England Academy



# **Summary Handbook for Year 7 Parents and Carers**

**2022/2023**

***'I can do all things through Christ who strengthens me'***

***Philippians 4:13***



# THE NOTTINGHAM EMMANUEL SCHOOL

A Church of England Academy

Gresham Park Road  
West Bridgford  
Nottingham  
NG2 7YF

E-mail: [admin@emmanuel.nottingham.sch.uk](mailto:admin@emmanuel.nottingham.sch.uk)

Website: [www.emmanuel.nottingham.sch.uk](http://www.emmanuel.nottingham.sch.uk)

Telephone: 0115 9775380

Main Reception is open:

Monday: 7:30am - 4.30pm

Tuesday: 7:30am - 4.30pm

Wednesday: 7:30am - 4.30pm

Thursday: 7:30am - 4.30pm

Friday: 7:30am - 4.30pm

Messages can be left on the school's answering facility outside of these hours.

## **Key Staff**

Name	Position in School
Sandra Stapleton	Principal
Sarah Anderson	Vice Principal (Teaching and Learning)
Kate Simpson	Assistant Principal (Achievement)
Robert Tapp	Assistant Principal (DSL, Pastoral and Behaviour)
Jon Wright	Assistant Principal (Curriculum)
Dan Dark	Assistant Principal (Head of Sixth Form)
Alana Watson	Regional Safeguarding Advisor
Lois Woodgate	Associative Assistant Principal (Parental Engagement, NES Diversity)
Emily Marsh	Academy Manager
Mari Paskin	SENDCo
Oli Marsh	Head of Year 7
Greg Jackson	Head of Year 8 (Senior Year Leader)
Jahren Barrow	Head of Year 9
Hugh Gardener	Head of Year 10
Shana Featonby	Head of Year 11

## **WELCOME AND INTRODUCTION BY THE PRINCIPAL**

Dear Parent

I would like to warmly welcome you and your child to the Emmanuel family. As a parent of a Year 6 child myself; I fully appreciate the excitement and anxiety both students and their parents feel as they prepare for the Secondary School transition. As a committed Christian leader it is a privilege to be able to live out the Christian values to which we all subscribe and build upon the outstanding reputation that Emmanuel has achieved. I firmly believe in establishing strong home-school relationships and am keen to meet with all of you in due course over the course of our transition programme. There is much to look forward to and our very committed team of staff will support, challenge and encourage your child as they journey through this important phase of secondary education.

We would greatly appreciate your support in finding time to read this Parent and Carer Handbook carefully and familiarising yourself with the information provided. Please keep it safely in a place where it can be used on a day-to-day basis - it is a valuable reference book on school life! The Handbook together with other documentation is also published on the school website under the 'Parents' section.

We particularly value the development of a close home-school partnership and we have already shared with you our Home-School Agreement. This is a summary of the main responsibilities of students, parents and teachers, all of whom were involved in putting this together. If we can fulfil these expectations together, then I am sure that everyone's experience of school and student achievement will be enhanced. As always, please let us know if you have any thoughts about how the school can respond more helpfully to your needs as parents.

Our Christian ethos is firmly grounded in core biblical principles of service, compassion, justice and respect for all, where every student is valued as an individual. We strive to ensure that self-confidence, ambition and purpose are consistently nurtured through praise, encouragement and celebration of achievement. Standards and expectations are high and an ambitious culture of learning is developed through a wide range of engaging and enterprising educational opportunities both within and beyond the classroom. Our focus on building strong relationships between teachers, students and their families, to embrace the whole area of personal and leadership development as a foundation to achieving academic excellence, has been borne out by the outstanding testimonies given by many, as they have reached the end of their public examinations. These are immensely proud moments as we reflect on how students have grown over their years with us. It is certainly an exciting time to be welcoming you and your family to the school!

The School Calendar, which is published over the summer holidays, ensures that there is an appropriate balance of school events including opportunities to support parents in their understanding of the school's policies and procedures and to provide feedback regarding student progress. Term dates are included at the back of this booklet to support parents in their planning of holidays. As you will already be aware, parents are not permitted to take their children out of school for holidays during the school term.

We greatly appreciate the support we receive from parents and therefore please do contact us at any time. We very much look forward to working in partnership with you over the forthcoming years.

Best wishes



**Sandra Stapleton**

**Principal**

## THE SCHOOL ETHOS

We are a Church of England Academy; a distinctive educational community for all based upon Christian faith and values. Our core mission is “to **remove barriers to learning**, ensuring that our students can **live life in all of its fullness** both academically and personally.

Our vision statement is:

**“I can do all things through Christ who strengthens me”**

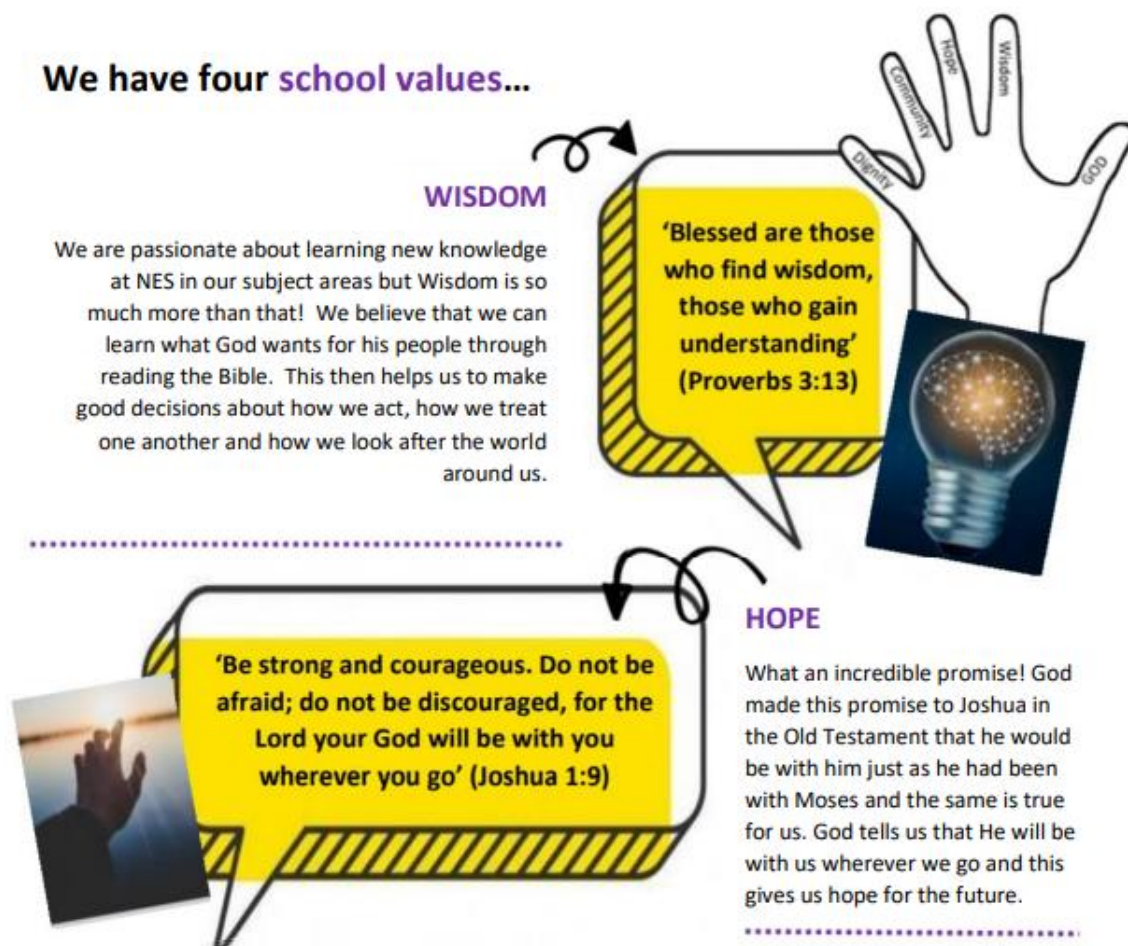
**Philippians 4:13**

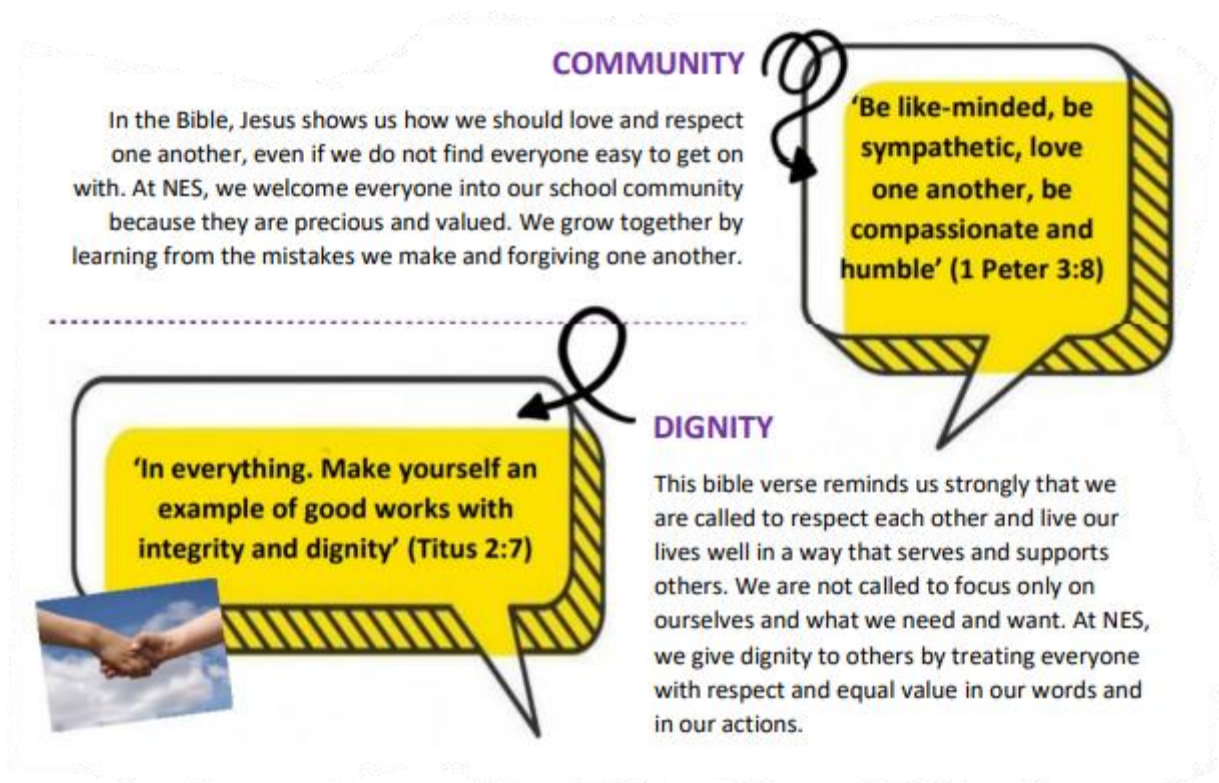
This verse shows us that Christ and faith provides us with the strength and resilience to overcome barriers within our own lives. We believe that education is a vehicle to transform lives, remove barriers to learning and provide each child the opportunity to not only learn and grow, but also to develop aspiration and character.

Nottingham Emmanuel School develops the ‘whole child’ ensuring that students **CAN through faith** achieve academic greatness alongside becoming resilient, hardworking and community-focused individuals who are prepared to go the extra mile to serve and support others. We believe that that we can find the strength to thrive; through drawing on the strength and comfort that our faith provides.

Our belief is that every student is unique and valued by God and we encourage all of our students to take an active role in serving others both within and beyond the school community through the House System. Our students are passionate about justice on a local, national and global scale. They are proud that faith dialogue is valued so highly in our community.

The work of the school centres on the four values of **Wisdom, Hope, Community** and **Dignity** which run through all of interactions with each other as well as our decision making processes. Each of our four values are associated with a piece of scripture, which enables the school community to fully understand and engage with each of them.





### Mission statement and Motto

Our aspirations are clearly articulated in the school mission statement; as a school we strive to ensure that 'children will encounter great learning, develop great character and become great servant-leaders'.

This mission is also further expressed in the school motto: **"Together to learn, to grow, to serve"**.

### Equal Opportunities Statement

Our school actively seeks to provide a relevant, worthwhile and appropriate education for all, acknowledging that the society within which we live is enriched by ethnic diversity, culture and faith of its citizens. We believe that all are equal in the eyes of God. Our aims are designed to ensure that the school creates a culture and environment for students and staff that enable them to be treated equitably, taking account of gender, ethnicity, culture, religion, language, sexual orientation, age, ability, disability and social circumstances. We foster respect, acceptance, understanding and friendship amongst all members of our community and are genuinely committed to eliminating discriminatory practice wherever it may occur.

NES Diversity is a school priority started in 2021 to ensure that the school community is fully represented in school; with opportunities to share different faiths, festivals and cultures throughout the school year.



## **WORKING IN PARTNERSHIP WITH PARENTS AND CARERS**

We are very proud of our school and we value you as a key partner in helping your child to be happy and successful. We encourage all of our children to remember that they are ambassadors for the school whether they are travelling to and from the school site, participating in offsite activities or working within the school environment. This means upholding the school's high expectations in relation to behaviour and wearing their uniform with pride. We do expect all involved to adhere to the agreement which is detailed below

**Home School Agreement - "I can do all things through Christ who strengthens me". *Philippians 4:13***

### **The School**

#### **We agree to:**

- ensure that your child feels safe, secure and valued in school
- be understanding and responsive to your child's needs and concerns
- promote high standards of work and behaviour in school and be consistent in our approach to adhering to the School Behaviour Policy
- provide a broad and balanced curriculum
- provide effective teaching and appropriate facilities and resources
- help your child to achieve their full potential and to share their targets
- communicate and consult regularly with home
- promote your child's spiritual development within a Christian ethos

### **The Student**

#### **I agree to:**

- be polite and respectful to all
- attend every day and on time
- be properly prepared and equipped for school following all of the School's Learning Foundations
- positively impact the learning experience of myself and my peers, meeting all school expectations
- complete classwork and assignments on time and to the best of my ability
- follow the uniform expectations
- look after school equipment and the school environment
- represent the school positively within the local community and beyond
- respect the school's Christian ethos
- use social media in an appropriate and responsible manner in line with the school's policies

### **The Parent/ Carer**

#### **I agree to:**

- be polite and respectful to all
- support the school's high expectations in relation to learning, behaviour and uniform
- support the school's Behaviour Policy and its application
- ensure daily attendance and punctuality
- make the school aware of any problems or concerns should they arise
- attend meetings concerning my child's progress
- encourage and support my child's academic work at home
- respect the school's Christian ethos
- take responsibility for monitoring my child's use of social media

## PASTORAL SUPPORT

### The Tutor

Each tutor group of students is attached to a year group and a House. The tutor group of approximately 30 students has its own tutor who is responsible for supporting the students in their care in all aspects of their school life - academic, social and personal. They will be closely monitoring students' academic progress through teacher assessment data and their rewards and behaviour record through the online school's information management system (Go4Schools). Advice and guidance can be given over any matter which might affect the individual's work and personal development. The Tutor is the first point of contact for parents and students over any matter relating to school life and wherever possible, usually stays with their tutor group from Year 7 - 11 to ensure continuity of pastoral care and support throughout the school career.

### The Year Leader

Our Year Leaders are non-teaching members of staff who are available throughout the day for students and parents. Part of their role is to visit classrooms and assist members of staff as well as overseeing the tutor team. They also undertake mentoring with identified students. The Year Leader is responsible for co-ordinating the work of the year group, monitoring overall academic progress and ensuring that the whole year group work together effectively and maintain high standards of behaviour. The Year Leader also actively delivers our programme of year group Acts of Worship.

### Pastoral Staffing Structure

Line Manager: Rob Tapp

Year Leader: Oli Marsh

Year 7 Tutor Team:

- Giselle Castelle Juarez
- Aiden Sharpe
- Alice Ferns
- Bethany Merrick
- Ngoc Tran
- Diana Malouni
- Charlotte O'Loughlin
- Sophie Clarke

### Who to Contact

The following table is designed to highlight who to contact in some of the more common pastoral and academic matters. Parents are encouraged to contact members of staff by email or by telephone. Staff will follow up the issues raised and in turn inform parents of the outcomes. We aim to respond to messages left by parents within two school days. Parents MUST inform the Student Services Reception as a matter of urgency if any contact details change.

MATTERS IN RELATION TO	SCHOOL CONTACT
<ul style="list-style-type: none"><li>• Family Situations</li><li>• Student absence and lateness</li><li>• Academic progress</li><li>• Student welfare, including health issues</li><li>• Homework assignments</li></ul>	Tutor  (first point of contact)
<ul style="list-style-type: none"><li>• Overall academic progress, intervention strategies and student behaviour or issues relating to relationships or bullying</li></ul>	Year Leader  (second point of contact)

MATTERS IN RELATION TO	SCHOOL CONTACT
<ul style="list-style-type: none"> <li>Teaching &amp; learning and student progress in individual subject areas</li> </ul>	Head of Department/ Lead Teacher (first point of contact)
<ul style="list-style-type: none"> <li>Teaching &amp; learning across the Learning Community</li> </ul>	Head of Faculty (second point of contact)
<ul style="list-style-type: none"> <li>Rewards</li> <li>House competitions</li> <li>Charity and service work</li> <li>Student achievement outside of school</li> <li>General Extra-Curricular programme</li> <li>Thursday afternoon enrichment programme (Year 7 only)</li> </ul>	Enrichment Coordinator
<ul style="list-style-type: none"> <li>Change of details information</li> <li>Travel details/ bus passes</li> <li>Lost property</li> <li>Free school meals</li> <li>Lockers</li> </ul>	Student Reception
<ul style="list-style-type: none"> <li>Additional support for learning</li> <li>Additional support for public examinations</li> </ul>	SENDCo – Miss Paskin  Examinations Officer

#### **Attendance Officer (Tara Hickman)**

The Attendance Officer looks after the welfare of the child and the family. She liaises with a variety of outside support agencies, including the Education Welfare Service, to ensure good attendance and punctuality and is a valuable school/home link in cases where students may experience difficulty.

#### **Attendance and Absence**

Students and parents are able to view their attendance percentage on Go4Schools. Tutors will also monitor your child's attendance and positive points will be given for 100% attendance and punctuality on a weekly basis, all points are totalled together at the end of a term for personalised reward opportunities as well as the end of year house competition.

Parents are required to contact the school before 7.30am each and every day of their child's absence either on the ParentMail app or by telephone (0115 9775380) and press 1 to report student absence.

Parents should avoid arranging medical appointments in school time unless absolutely necessary for emergencies. We would expect that the student is only out of school for part of the day and we must be informed a minimum of 48 hours beforehand. Students must sign in and out of school at Main Reception.

**Parents are reminded that they are not permitted to take their children out of school for holidays during the school term. It is important that students are present and fully involved in on-going assessments and school examinations. The school will issue fixed penalty notices to parents for unauthorised absences. We advise you to check the school's website for our up to date calendar of term time dates in advance of any holiday booking.**



## Safeguarding Children

At The Nottingham Emmanuel School, the governors and staff fully recognise the contribution the academies within the Trust make to safeguarding children. We recognise that the safety and protection of all students is of paramount importance and that all staff, including volunteers, have a full and active part to play in providing early help protecting students from harm. We believe that as a school we should provide a caring, positive, safe and stimulating environment, which promotes the social, physical, emotional and moral development of all students. In delivering this ambition we will adhere to the principles set out in Nottingham's Family Support Strategy and NCSCB Policy, Procedures and Practice Guidance, in addition to the Keeping Children Safe in Education 2021 statutory guidance.

Rob Tapp is the Designated Safeguarding Lead (DSL) and works with 9 other deputy DSLs to ensure every student feels safe and secure and the highest standards are met at all times in this area.



**Mr Tapp**  
Assistant  
Principal



**Mrs Brenham**  
Targeted Support  
Lead



**Mrs Watson –**  
Trust Safeguarding

### We have 9 Deputy Designated Safeguarding Leads



**Mrs Stapleton**  
Principal



**Mr Dark**  
Head of P16



**Mr Jackson**  
Senior Year Leader



**Mr Marsh**  
Year Leader



**Mrs Featonby**  
Year Leader



**Mr Gardner**  
Year Leader



**Mr Holness**  
Year Leader



**Mr Barrow**  
Year Leader



**Miss Lounds**  
ILU Supervisor

## Rewards

The role of rewards and praise in recognising and promoting NES's values is a key component of developing the potential of our students by giving them encouragement and praise. NES aim to use a combination of short, medium and long term rewards to acknowledge and reflect positive behaviours.

House 'Value' Points Students currently receive house points as an acknowledgement of positive behaviour both within the classroom and wider school. Value points are received for a variety of behaviours which include but are not limited to:

- Positive classroom behaviours
- 100% Attendance
- NES representation

Our rewards reflect the four core values of the school; Wisdom, Community, Dignity and Hope. Students will earn value points for each core value or "pillar". Students will be educated around each core pillar and informed of the behaviours which will earn them value points.

Star Rewards To reflect the accumulation of positive points over the academic year students work towards achieving star badges. The star badges reflect point targets being achieved by students.

**Star Rewards**  
**House Point Structure**

Points Total	Badge	Reward
100 points		Certificate Purple Badge Text message Phone call (tutor)
200 points		Certificate White Badge Text message Phone all home (Year Leader)
300 points		Certificate Gold Badge Text Message Phone call home (SLT)
400 points		Certificate Mystery Badge Text Message Phone call home (Principal)

## Student Behaviour

We expect our students' behaviour to consistently meet our high standards and remind all that behaviour both to and from the school is monitored to ensure that it meets our standards and expectations. Students who fail to meet these expectations will be punished in accordance with our Behaviour Statement of Practice. We believe in

restorative practises to enable our students to reflect on their actions and modify their behaviours to prevent re-occurrence of such negative displays, ensuring that positive behaviour is constantly mirrored and rewarded

## NES Learning Foundations



**Uniform**  
Students will be smartly dressed in full school uniform at all times throughout the school day.



**Mobile phones & accessories**  
All mobile devices and accessories are banned within the school building. Students will turn off devices and place them into their school bag for the entire school day.



**No physical contact**  
Students will not make intentional physical contact with other students throughout the school day.



**Following all instructions & school routines**  
Students will follow staff instructions and school routines at all times.



**Punctuality**  
Students will arrive promptly to school and lessons.



**Outside – students**  
will respect the outside environment by placing litter into bins and not damaging school equipment.



### Respecting the environment

**Inside – students**  
will respect the inside environment by walking calmly and quietly on the left hand side and following directional systems.



**Public transport –**  
students will respect all methods of public transport and everyone using or operating public transport all of the time.



**Equipment**  
All students will bring basic equipment every day. This will include a school bag and pencil case containing pen, pencil, rubber, ruler and scientific calculator



**Eating and drinking**  
Eating will only take place in designated areas. Chewing gum is banned at all times. With the exception of water no food or drink is allowed to be consumed in lessons.

Students will respect all Emmanuel staff at all times.



**'I am able to all things through Christ who strengthens me' Phillipians 4:13**

	Description	Consequence of behaviour
Warning 1	<p>Student receives Warning 1 if they demonstrate any behaviours which prevent learning</p> <p><b>This is disruptive behaviour</b></p>	<p>Students will be reminded that 100% of students deserve to learn 100% of the time.</p> <p>Student asked/shown how to modify behaviour</p>
Warning 2	<p>Student receives a Warning 2 if they repeat or demonstrate a second behaviour which prevents learning</p> <p><b>This is repeated disruptive behaviour</b></p>	<p>Students will be reminded that 100% of students deserve to learn 100% of the time.</p> <p>Student asked/shown how to modify behaviour</p> <p>15minute teacher/subject detention or Reflective homework</p>
Negative Point	<p>Students will receive a Negative Point if they demonstrate behaviour which prevents learning for a third time</p> <p><b>This is persistent disruptive behaviour</b></p>	<p>Teacher contact home</p> <p>1 hour after school detention</p>
Direct Negative Point	<p>Any behaviour listed below which is reported whilst a student is in school or travelling to or from school will result in a direct negative point, removal from lesson and an investigation completed</p> <ul style="list-style-type: none"> <li>• Verbal or physical abuse</li> <li>• Hate Speech</li> <li>• Defiance (3 instructional repeats)</li> <li>• Damage</li> <li>• Endangering the health and safety of others</li> <li>• Bullying</li> <li>• Misconduct</li> <li>• Any other behaviour which is deemed inappropriate</li> <li>• Serious Learning Foundation Breach</li> </ul> <p><b>This is a serious behaviour breach</b></p>	<p>Use walkabout email to alert of the DNP</p> <p>Student collected</p> <p>Placed in ILU</p> <p>Incident investigated</p> <p>YL or SLT to decide upon appropriate sanction.</p> <p>Communication home</p>

## Mobile Phones

The Nottingham Emmanuel School recognises the benefits and opportunities which new technologies offer to teaching and learning. We provide internet access to all of our students and encourage the use of technologies in order to enhance skills, promote achievement and enable lifelong learning. We also appreciate the safety benefits for families in allowing their child to have a mobile phone when travelling to and from the academy and we feel this should continue. However, we have become increasingly concerned that the array of new technologies incorporated more recently into mobile phones, presents a temptation which can not only inhibit learning within the classroom but also contravenes our IT user agreement, with respect to student access to social networking sites whilst in school and our wider safeguarding duties as a result. In relation to mobile phones, we have clearly stated that **under no circumstances must any phone be used, or be on view, whilst on the school premises during the school day.** If a phone is seen by any member of staff, it will be confiscated and communication made to parents/carers and collection arranged at a time that is convenient to the staff at Main Reception. We ask for parents' support in reiterating this policy with their child to avoid any unnecessary confrontation.

## KS3 School Day

Bell	8:25am	School gates close
Bell	8:30-9:00	Morning registration, Act of Worship and/or tutor period
	9:00-10:00	Period 1
	10:00-10:15	BREAK
	10:15-11:15	Period 2
	11:15-12:00	LUNCH
	12:00-13:00	Period 3
	13:00-14:00	Period 4
	14:00-15:00	Period 5

**Thursdays** are slightly different as students finish their lessons at 2.00pm. At that time, teachers begin an extended afternoon of training and development to plan and assess together to ensure high quality teaching and learning for all students. It is **compulsory** for all Year 7 students to engage in the Thursday afternoon enrichment programme which starts at 2:00pm. Students in other year groups will be free to go home at that time, or to study independently in one of our libraries or study rooms.

### Break and Lunchtime Arrangements

We are fortunate to be able to provide drinks and snacks at morning break and students are required to queue up sensibly. At lunchtime all students are required to remain on the school site and they may choose to purchase either the set meal or snacks which are individually priced. No food is allowed to be taken through the zone gates and can only be eaten in the dining room or the Cloister area. Students must be responsible for disposing of their litter in the bins provided so that the classroom is ready for learning to take place following lunchtime.

All students will be given an NES water bottle on arrival. We do not sell bottles of drink anymore on the school site. Instead students can purchase a token to fill up their bottles at our Generation Juice stations or use the free water fountains around school.

### NES Access Card

The School operates a cashless card system. At the beginning of the first term at school all students are issued with a 'credit' type card which also serves as a library and locker pass. Our online payment system, ParentMail provides a fast and secure way for payment and also helps to reduce the administration involved in processing payments and banking the cash. Effectively this means that your child does not need to bring cash into school to pay for lunches or use the top up machines in the Dining Hall, although money can also be manually put onto the card; machines are located in the dining hall which is accessible from 8am before school commences, at break time or lunchtime. Students will be required to pay £1 by ParentMail for a replacement card if they lose the original card given to them by the School.

## SCHOOL UNIFORM REGULATIONS

All students are required to wear the school uniform, which was agreed in the context of a dress code for all groups of students, and to follow the regulations as published below. A high standard of dress is expected and exaggerated styles are inappropriate. Day to day monitoring of the implementation of our policy will ensure consistency across the school and we ask for the co-operation of parents in ensuring that we work together to maintain our regulations. It is important that students dress smartly wearing their uniform with pride whilst travelling to and from school, throughout the school day and when representing the school elsewhere. Please mark uniform with your child's name so it can be returned if lost.

UNIFORM LIST
Black Blazer and school badge (exclusive design for Emmanuel)*
Plain white Shirt buttoned to the neck and with a rigid collar – short sleeved or long sleeved
School Tie (with stripe in the house colour)*
Plain black formal skirt of knee length (fashion skirts are not allowed i.e. lycra, bodycon) or Plain black formal cotton school trousers (not leggings or trousers made from denim, canvas or lycra)
Plain black belt
Plain black/flesh coloured tights or plain black or white socks
Where appropriate students are permitted to wear a plain black kamiz or a plain black shalwar (with a school tie), and optional plain hijab (grey, purple or black).  Turbans and Handkerchiefs must be plain black or purple in colour
Plain black formal low-heeled smart shoes (no sports brands, canvas, high heels, boots of any type or sling backs are allowed)
Outerwear: Students must wear a practical coat (leather and denim coats, sweatshirts, hooded/tracksuit tops and sports branded jackets are not permitted). Black or purple headbands only are permitted, baseball caps are not permitted  Students must have a practical school bag (pouches and handbags are not permitted).  Bags must be big enough to carry a number of A4 size books  Students are encouraged to wear a protective luminous jacket and a safety helmet if cycling

PHYSICAL EDUCATION
Indoor Uniform
Polo shirt (Purple with embroidered school badge)*
Games shorts or cycling shorts (plain black)
Sports ankle socks (black)
Trainers with non-marking soles (for health and safety reasons fashion trainers/boots or plimsolls are not permitted)
Outdoor Uniform

Black and Purple school games jersey*
Games shorts or cycling shorts (plain black)
Games long socks (black)
<p><b>The following are optional items:</b></p> <p>gum shield, plain black tracksuit bottoms, studded boots and shin pads</p>

**\* Must be purchased from Just Schoolwear. Other uniform items can be purchased from your choice of retailers**

### Jewellery

For health and safety reasons **NO** jewellery may be worn apart from a wristwatch. Inexpensive watches are acceptable but watches, such as the Apple Watch etc., which can carry data and allow communication are not permitted under any circumstance to fall in line with our policy on electronic devices at Nottingham Emmanuel School. Students may wear a small lapel pin representing their faith, such as a cross or a fish for example. Any other jewellery worn by students will be confiscated and returned to parents who may come into school to collect it at a time convenient to the staff. Alternatively students can collect their property at the end of the last day of each half term. In order to comply with our policy, if a student wishes to have their ears pierced this must be done at the beginning of the long summer holiday so that the wound has sufficient time to heal and earrings do not need to be worn in school. Plasters may **NOT** be worn to protect earrings or any other piercing.

### Hair, Make-up and Nail Polish

Hair styles should not be excessively long, multi-coloured (dip dyed) or of non natural colour i.e. bright red, pink, blue etc. Hair styles should be formal and sensible without lines, shaved sections, patterns or wedges. Hair accessories should be plain black or purple (**no bandanas, large head bands, coloured accessories allowed**).

No make -up, body piercings, nail polish, false/acrylic nails, fashion badges/bracelets are allowed.

### Compulsory Equipment

All students are required to purchase the following equipment, which must ALL be clearly marked with the student's name:

- Pens (blue or black for writing), HB pencils, coloured pencils, pencil sharpener, eraser, ruler, protractor and a pair of compasses
- Pocket dictionary (English and Spanish/French)
- Scientific calculator
- Headphones

All students should carry a practical school bag (pouches are not permitted) containing the above equipment as well as their subject books and Student Planner to every lesson. Bags should be big enough to carry several A4 size books.



# THE NOTTINGHAM EMMANUEL SCHOOL

A Church of England Academy

## Academy Term Dates 2022/23

August 2022

M		1	8	15	22	29
T		2	9	16	23	30
W		3	10	17	24	31
T		4	11	18	25	
F		5	12	19	26	
S		6	13	20	27	
S		7	14	21	28	

September 2022

	5	12	19	26	
	6	13	20	27	
	7	14	21	28	
1	8	15	22	29	
2	9	16	23	30	
3	10	17	24		
4	11	18	25		

October 2022

	3	10	17	24	31
	4	11	18	25	
	5	12	19	26	
	6	13	20	27	
	7	14	21	28	
1	8	15	22	29	
2	9	16	23	30	

November 2022

M		7	14	21	28	
T	1	8	15	22	29	
W	2	9	16	23	30	
T	3	10	17	24		
F	4	11	18	25		
S	5	12	19	26		
S	6	13	20	27		

December 2022

	5	12	19	26	
	6	13	20	27	
	7	14	21	28	
1	8	15	22	29	
2	9	16	23	30	
3	10	17	24	31	
4	11	18	25		

January 2023

	2	9	16	23	30
	3	10	17	24	31
	4	11	18	25	
	5	12	19	26	
	6	13	20	27	
	7	14	21	28	
1	8	15	22	29	

February 2023

M		6	13	20	27	
T		7	14	21	28	
W	1	8	15	22		
T	2	9	16	23		
F	3	10	17	24		
S	4	11	18	25		
S	5	12	19	26		

March 2023

	6	13	20	27	
	7	14	21	28	
1	8	15	22	29	
2	9	16	23	30	
3	10	17	24	31	
4	11	18	25		
5	12	19	26		

April 2023

	3	10	17	24	
	4	11	18	25	
	5	12	19	26	
	6	13	20	27	
	7	14	21	28	
1	8	15	22	29	
2	9	16	23	30	

May 2023

M		1	8	15	22	29
T		2	9	16	23	30
W		3	10	17	24	31
T		4	11	18	25	
F		5	12	19	26	
S		6	13	20	27	
S		7	14	21	28	

June 2023

	5	12	19	26	
	6	13	20	27	
	7	14	21	28	
1	8	15	22	29	
2	9	16	23	30	
3	10	17	24		
4	11	18	25		

July 2023

	3	10	17	24	31
	4	11	18	25	
	5	12	19	26	
	6	13	20	27	
	7	14	21	28	
1	8	15	22	29	
2	9	16	23	30	

 Academy Holidays

 GCSE Result Day

 Public Holidays

 A Level Results Day

 INSET Day





