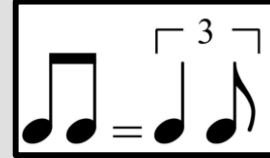
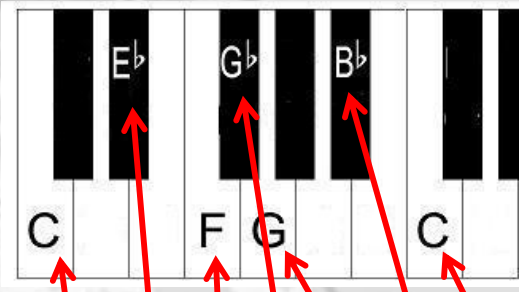
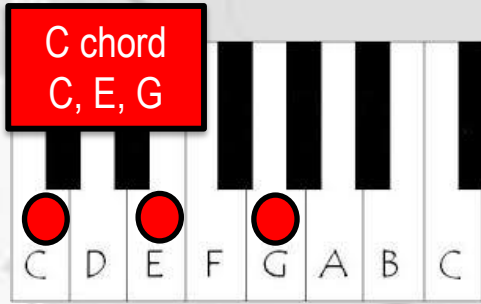


Chord – two or more notes played at the same time

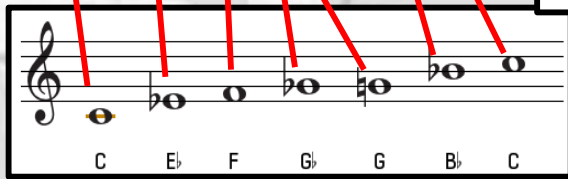
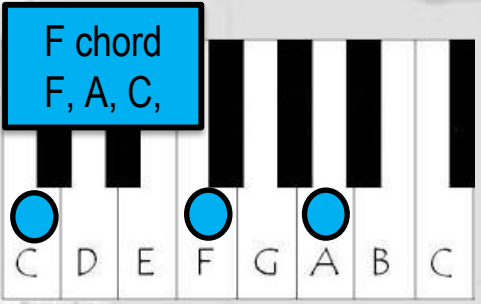
Blues Scale – a scale used for improvising

12-bar blues chords in C



Swing rhythm

Improvising – making up music on the spot



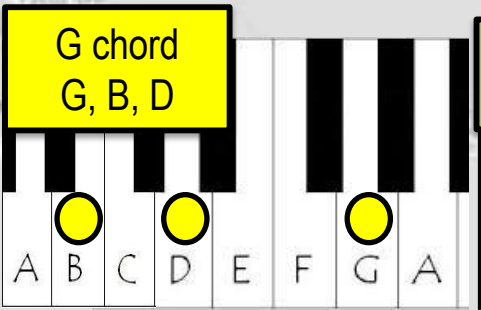
Blues Lyrics follow AAB structure

- A** Mmmm, standin' at the crossroad, I tried to flag a ride
- A** Standin' at the crossroad, I tried to flag a ride
- B** Didn't nobody seem to know me, everybody pass me by

C ///	C ///	C ///	C ///
F ///	F ///	C ///	C ///
G ///	F ///	C ///	C ///

12-Bar Blues Progression

I ///	I ///	I ///	I ///
IV ///	IV ///	I ///	I ///
V ///	IV ///	I ///	I ///



Walking Bass Line – uses the most important notes from the chords



Tonic – 1st **I** (C chord)
Subdominant – 4th **IV** (F chord)
Dominant – 5th **V** (G chord)

